

Early Career Development Course

Pearls, Possibilities & Pitfalls: Writing Successful Grants and Manuscript Submissions

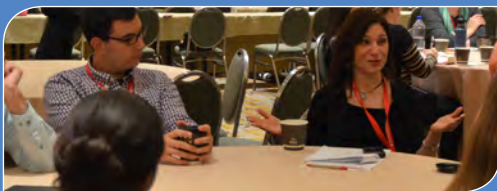
Held the day the CORE Conference kicks-off, this full-day workshop is designed to help catapult your career. ***No wonder it's a perennial favorite.*** Experience up-close, casual, interactive exchanges with mentors who care about you and your trajectory.

This course is included in the WORLD PASS, but seats are limited so register early. *MORE: [ACRM.org/ecdc](https://www.acrm.org/ecdc)*



SARAH CALLAHAN, MOT OTR/L
Occupational Therapist/Clinical Research Scientist,
Shepherd Center

"I found the **Early Career Development Course** so helpful to understand the research landscape better and to know what resources were available to me as an early career professional. The course helped me start to meet people and to network.



**turbo-charge
your career here**

ALL-STAR FACULTY LINE-UP...



KEYNOTE SPEAKER

ALLEN HEINEMANN, PHD, ABPP

Co-Editor-in-Chief, *Archives of Physical Medicine & Rehabilitation*, Professor of Physical Medicine and Rehabilitation, Emergency Medicine and Medical Social Sciences, Feinberg School of Medicine, Northwestern University



KEYNOTE SPEAKER **GLENN COLLINS**, BS, Managing

Editor, *Archives of Physical Medicine & Rehabilitation* & ACRM |
American Congress of Rehabilitation Medicine

REZA EHSANIAN, MD, PhD, Post-Doc, Stanford Hosp & Clinics,
Palo Alto, CA

MONIQUE PAPPADIS, MEd, PhD, Assistant Professor, University of Texas Medical Branch at Galveston

ALLEN HEINEMANN, PhD, ABPP, Keynote speaker (see above)

EDELLE FIELD-FOTE, PT, PhD, FAPTA, Director,
Spinal Cord Injury Research, Shepherd Center

STEPHANIE KOLAKOWSKY-HAYNER, PhD, CBIST, FACRM,
Associate Professor of Rehabilitation Medicine, Icahn School of
Medicine at Mount Sinai

RALPH NITKIN, PhD, Deputy Director, National Center for Medical Rehabilitation Research, National Center for Medical Rehabilitation Research Eunice Kennedy Shriver National Institute of Child Health and Human Development National Institutes of Health

CLAIRE KALPAKJIAN, PhD, MS, Associate Professor, University of Michigan, Department of Physical Medicine and Rehabilitation

JONATHAN BEAN, MD, MS, MPH, Associate Professor,
Harvard Medical School

JEFFREY BASFORD, MD, PhD, Professor Physical Medicine and Rehabilitation, Mayo Clinic; Editor-in-Chief, *Archives of Physical Medicine and Rehabilitation*, 2007 - 2013

PATRICIA DORN, PhD; Director, Rehabilitation Research and Development Service, Department of Veterans Affairs

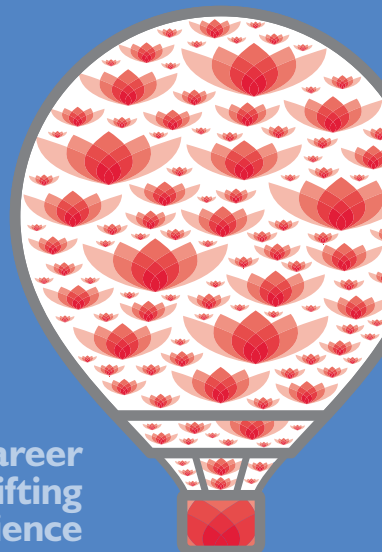
A. CATE MILLER, PhD, Rehabilitation Program Specialist, NIDILRR

the best advice you've not yet heard...

SUNDAY 30 SEPT 2018
8:00 AM - 3:00 PM



This course is a ticketed event with separate registration. This ticket is included in the **WORLD PASS**.



career
lifting
experience



**find answers to your
burning questions**



EARLY CAREER NETWORKING GROUP

*This course is developed by the ACRM Early Career
Networking Group: ACRM.org/earlycareer*

**meet
your
new
mentors**

**SEE DETAILS, AGENDA
& REGISTER**
www.ACRM.org/ecdc

